



# SWIFT Solution Accelerators

## Simplified Implementation and Comprehensive Message Management

Volante Technologies provides complete support for SWIFT messaging through the SWIFT 'Format Plug-in' for Volante Designer. The SWIFT plug-in supports all SWIFT published message standards via built-in data field dictionaries. The plug-in comes pre-populated with all SWIFT MT and MX messages, along with network validation rules.

Volante also supports MT-MX coexistence, enabling users to send or receive messages in either ISO 7775/15022 or ISO 20022 format. The provision of MT-MX transformation solutions for standards co-existence helps numerous organizations simplify their SWIFT connectivity and streamline business processes over SWIFTNet in a short time frame.

### Target applications

- MT-MX Coexistence
- SWIFT for Corporates
  - MT1nn, SCORE, MX pain, camt and eBAM
- SEPA
- Payment Hubs
  - Bank to bank
  - Corporate to bank
- Clearing & Settlement
- Corporate Actions
- Trade Services
- Treasury
- Cash Management
- Reference data
  - Message transformation
  - Rule-based reconciliation
  - Data normalization
- Web Forms for SWIFT
  - Dashboard monitoring
  - Message entry, view & repair
- FileAct & InterAct Applications
  - Bulking & de-bulking
  - Logic-based on payment size and urgency
- High Volume
- Low Latency

### How does the Volante SWIFT plug-in work?

The SWIFT plug-in is an add-on to Volante Designer, the modelling environment to define data integration, enrichment and transformation logic. With off-the-shelf SWIFT message models, validation rules and transformation logic built into their integration software, users can choose the messaging elements they need. The published SWIFT specifications can also be extended to match the firm's unique data environment which may only be based on SWIFT standards, as well as on the requirements of internal applications or specific correspondents. Volante also supports market practice guidelines in:

- Payments
- Securities
- Trade Finance

### SWIFT Payment Solutions

Whether it's traditional FIN payments or the newly mandated SEPA initiatives utilizing ISO 20022, the clear trend is that more and more payment messages for credit transfer, direct debit and status information are flowing through the SWIFT network. Volante supports all of the payment formats across every phase of the transaction. Other value added features such as reconciliation, audit logs, dashboards for monitoring and error handling, are facilitated using Volante's unique approach to data services management.

### SWIFT for Corporates

Volante can be used in all three models that SWIFT provides for corporates to join the SWIFT network: SCORE, MA-CUGs and Treasury Counterparty (TRCO). By using Volante to connect to the SWIFT network with any of these models, corporates can streamline their treasury operations to work with a single global window to the financial industry.

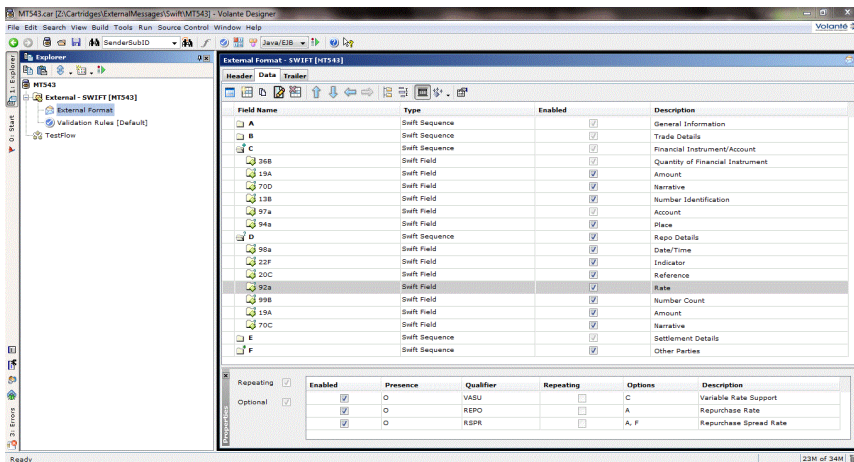
Volante eliminates the need for hand-coding with its innovative model-driven approach, typically cutting time and costs by half or more in SWIFT development projects. Message creation and data management functions – such as validation, enrichment or persistence to databases -- can be automatically generated for any platform.

Volante also runs in any network or application environment, essentially integrating “anything to anything” in the financial enterprise.



Volante provides a modelling environment with embedded knowledge of financial industry data, relieving users from the technicalities of data integration. From a familiar spreadsheet-style interface (see below), users define business messages and map them to applications and external entities.

### Volante with Built-In SWIFT Message Library



### Volante MT-MX

SWIFT has promoted a model of co-existence for the FIN (MT) and ISO 20022 (MX) messaging standards with the objective of easing the migration path for financial institutions. While this approach somewhat insulates internal applications and processes from the new message layouts and rules, it still involves significant effort on behalf of firms to bridge the gap. There are wide disparities between these standards which require deep standards knowledge to implement the translations.

### How does the Volante MT-MX solution work?

Volante’s MT-MX accelerator is applicable to both small and large organizations – serving as either an out-of-the-box solution or a customizable framework. For current users of MT messages looking to migrate to the more specialized MX messages, as well as users interested in new initiatives like SEPA, SCORE, Funds, etc., Volante provides comprehensive coverage while also hiding the complexity of the new standards to enable easy and rapid adoption of the new standard.

Volante has a long-established partnership with SWIFT, being the first to be awarded the old SWIFT Messaging Data Services Certification. Volante continued to earn perfect scores in the annual certification until SWIFT discontinued the label in 2012.

### Unique Features

- Pre-built SWIFT messages with built-in Network Validation Rules.
- Support for FIN, InterAct & FileAct
- Process large batches of data
- Support for SRG within one month of publication
- Support for Market Practice Groups
- Native support for any infrastructure
  - Application Servers
  - Enterprise Services Bus
  - Implementations in Java, C++, C#
  - Cloud
  - JVM

### Business Benefits

- Proven technology in top-tier banks and corporates
- Simple, business-based message design
- Rapid delivery of SWIFT projects and functionality
- Cost-efficient payments handling for SWIFTNet
- Full support of more payment standards and networks

## Extended Features

In addition to bi-directional translation between MT and MX formats, Volante supports the most efficient flow of data through modelling of business processes in Volante Designer. Extended features include:

Extended features include:

- Business validations
- Reference data lookups and validations
- Translation with other standard or proprietary message formats
- Persistence to databases
- Automatic handling of exceptions without manual intervention
- Ability to enter, view and repair messages via a browser
- Transaction status monitoring
- Auditing and reporting

Volante MT-MX addresses a variety of customer challenges and includes the following features:

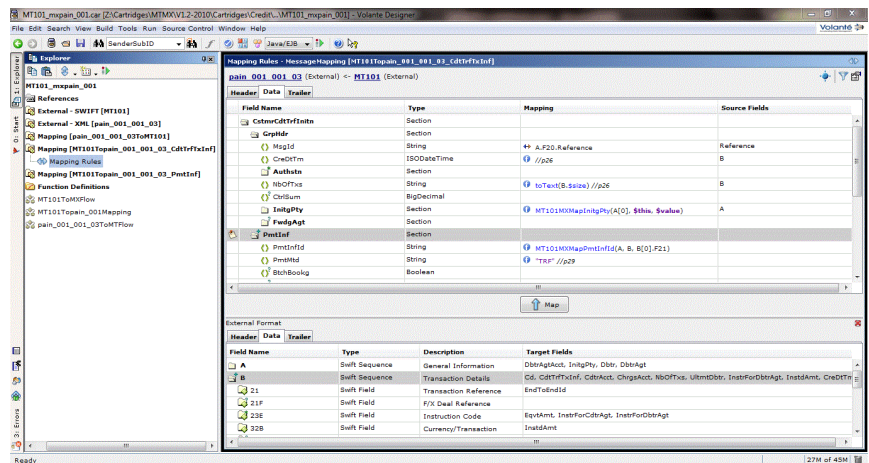
- Pre-built library of translation functions
- Support of all published translation guides
- Customization catering to business-specific usage
- Extends to incorporate additional business logic
  - Validations
  - Conditional translations
  - Message routing
  - Exception handling
- Native support for any infrastructure
  - Application servers
  - Enterprise services bus
  - Message brokers
  - Legacy systems
  - Cloud

## How is Volante MT-MX different?

The core of the Volante MT-MX accelerator is an extensive translation function library, based on the data dictionaries of the ISO 7775/15022 and ISO 20022 standards. Message translations are easy to implement for any business domain with a pre-built set of conditions and translation rules that ensures consistency and simplifies maintenance. When events match these conditions, translation functions are automatically invoked.

Volante MT-MX can be deployed on virtually any environment – middleware, network and applications. With customizable models converted into runtime libraries, Volante code generators automatically produce native code for a wide range of platforms – ESBs, application servers, message brokers, cloud, etc. – and, in particular, existing infrastructure.

## Volante Composer with Built-in Translation Functions



Volante provides product upgrades as new versions of the SWIFT standards or new translation guides are released.

Contact us at [www.volantetech.com](http://www.volantetech.com) to find out more about our SWIFT and MT-MX capabilities.